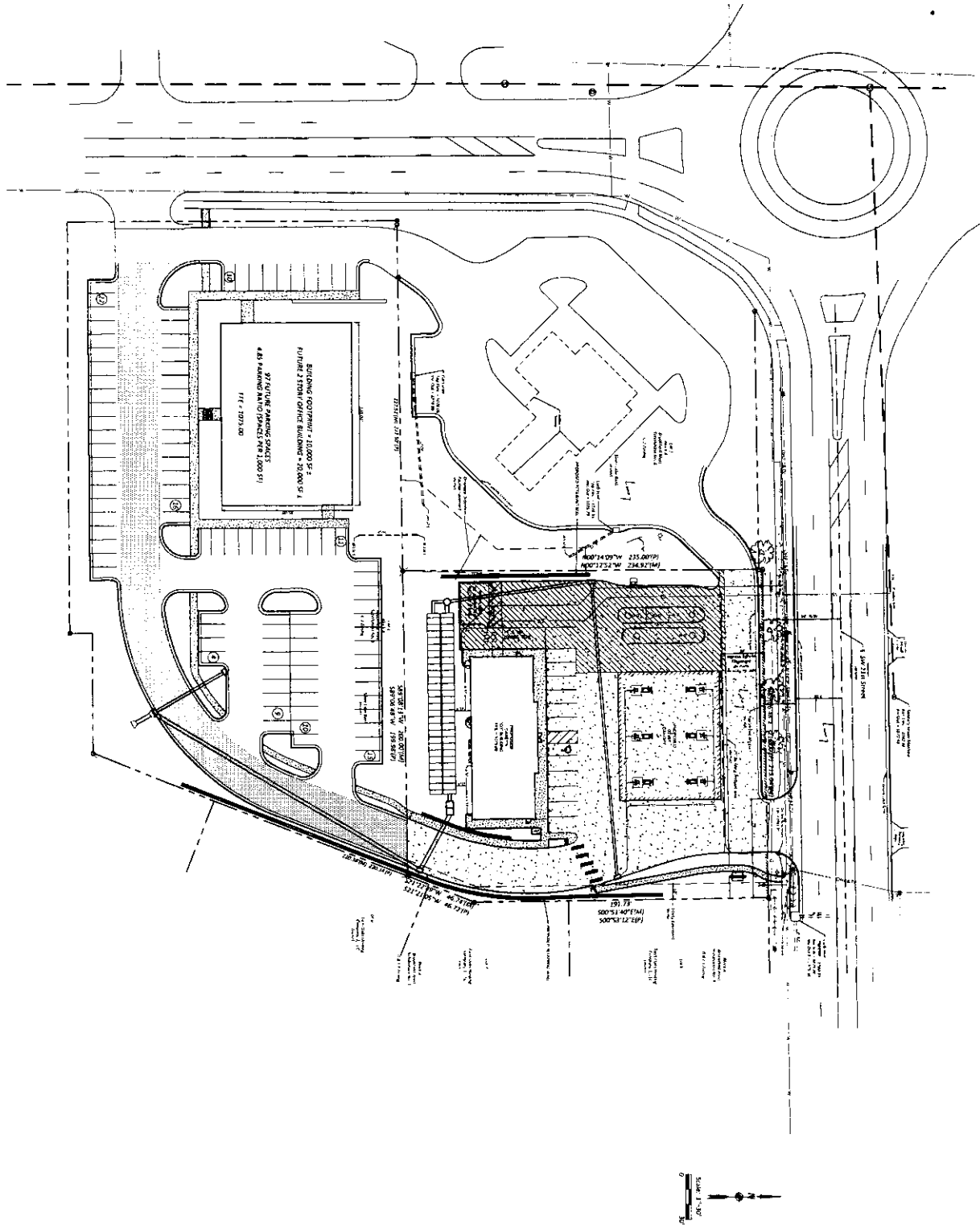


The attached is a concept plan of Lot 3 Brookfield West Sub'd No. 6 and a part of the Sub'd Plan. The concept plan shows a cross access drive that is in place (future curb cuts will need to be made). There are common Topeka drainage easements that are Not Shown but are available for interested parties.

Lot 3 has an area totals 1.9 acres or 82,787 sf which includes all drainage and cross access easements.



DATE	DESCRIPTION

PROJECT TITLE	CONCEPT PLAN
PROJECT LOCATION	SW Urish Road & SW 21st Street Topeka, Kansas 66614



Schmidt, Beck & Boyd  
Engineering, LLC  
1415 SW Topeka Blvd  
Topeka, KS 66612  
Ph: (785) 215-8930

Prepared For:  
Casey's General Stores, Inc.  
P.O. Box 3001, One Convenience Boulevard  
Ankeny, Iowa 50021-8045

REV.	DATE	DESCRIPTION